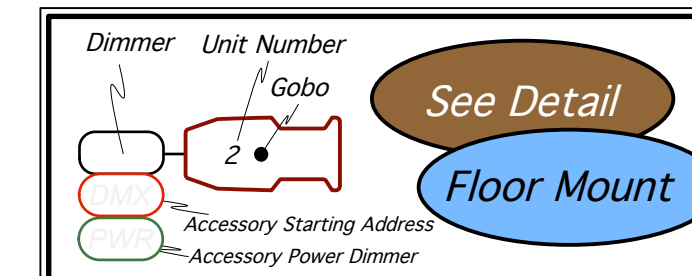
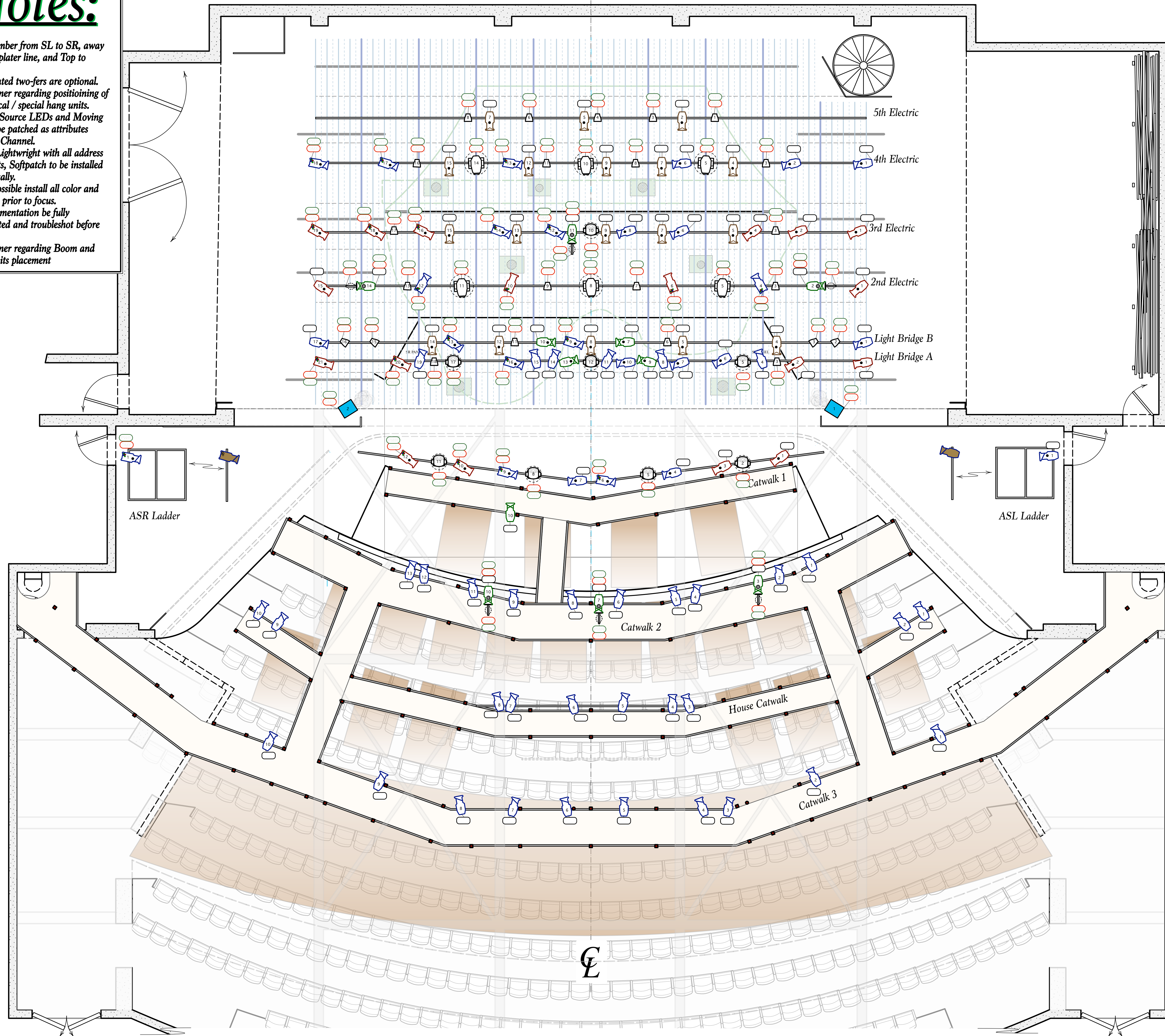


Notes:

- Units number from SL to SR, away from the plater line, and Top to Bottom.
- All indicated two-fers are optional. See designer regarding positioning of all practical / special hang units.
- All ColorSource LEDs and Moving lights to be patched as attributes Intensity Channel.
- Update Lightwright with all address assignments, Softpatch to be installed electronically.
- Where possible install all color and templates prior to focus.
- All instrumentation be fully documented and troubleshot before focus.
- See designer regarding Boom and Floor Units placement



Key	
	- Source 4 19" @ 750 Watts
	- Source 4 26" @ 750 Watts
	- Source 4 36" @ 750 Watts
	- Source 4 50" @ 750 Watts
	- ColorSource 4 19" @ 150 Watts
	- ColorSource 4 26" @ 150 Watts
	- ColorSource 4 36" @ 150 Watts
	- ColorSource 4 50" @ 150 Watts
	- ColorSource PAR @ 90 Watts
	- Robe Spider @ 600 Watts
	- Radiance Hazer
	- Robe DX4L Spot @ 660 Watts

29 -	- Full Stage BO Drop
28 -	- Full Stage Scrim
27 -	- Tree Drop
26 -	- Full Stage Scrim
25 -	-
24 -	- 5th Electric
23 -	- Legs
22 -	- Border
21 -	-
20 -	- 4th Electric
19 -	-
18 -	- Trees
17 -	-
16 -	- Border
15 -	- MS Palace Wall
14 -	- Legs
13 -	- 3rd Electric
12 -	- Border
11 -	- Trees
10 -	-
9 -	- Legs
8 -	- 2nd Electric
7 -	- Border
6 -	-
5 -	- DS Palace Wall
4 -	- Border
3 -	- Legs (Dead Hung)
2 -	- Trees
1 -	- Border



Show: As You Like It		
Theater: Taylor Theatre-UNCG		
Director: John Gulley		
Plate: 1	Scale: 1/4" = 1'-0"	Date: August 23, 2017
Designer: Katie Ward	View: Lighting Plot	
Assistant Lighting Designer: Caleb Taylor	Draft: KW (Vectorworks 2017)	