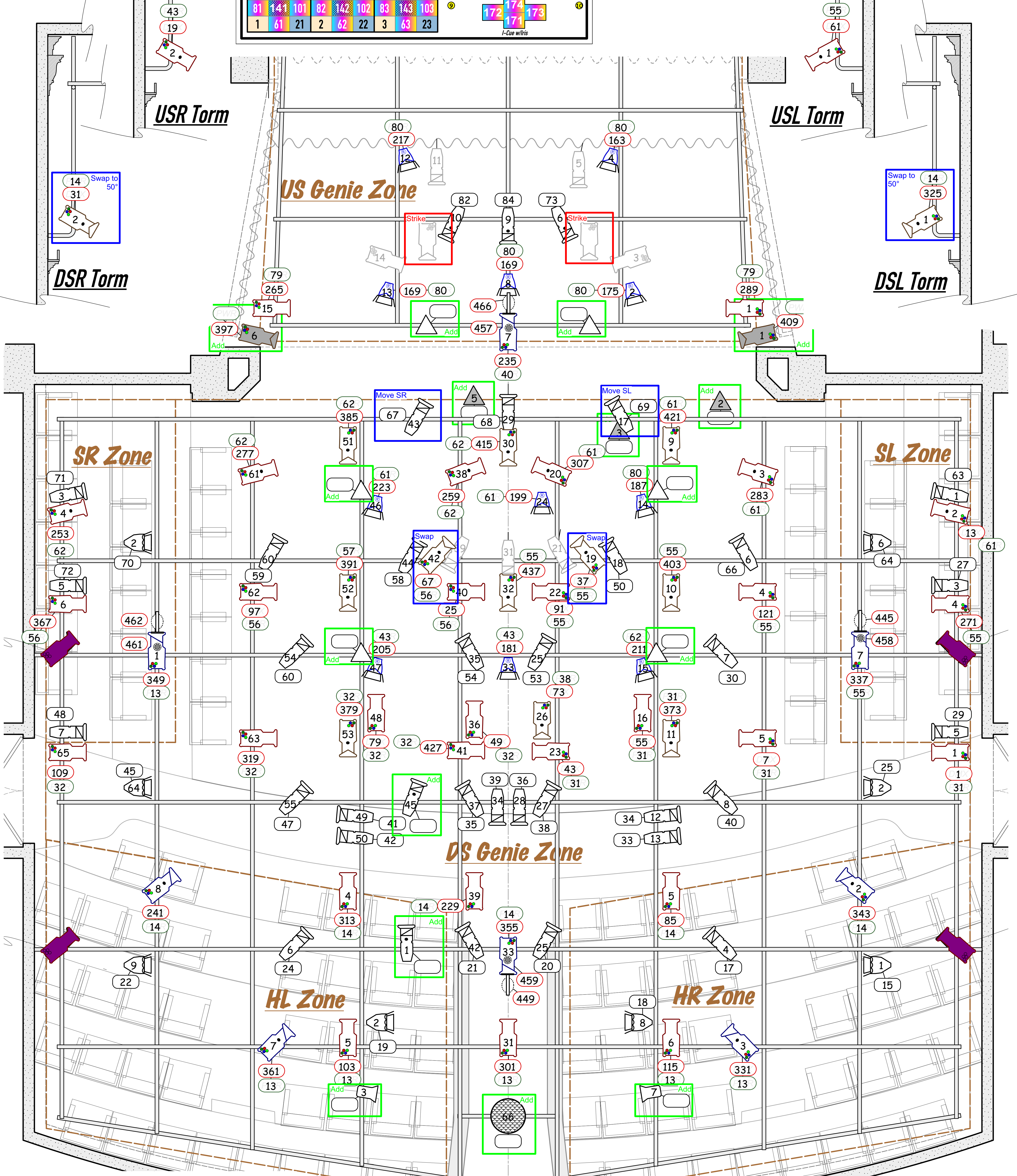


130	50	131	51	Sprinkle Theatre		UNCG Theatre						
90	150	110	91	151	111	Rep Plot 2019						
10	70	30	11	71	31	200 - Worklights						
127	47	128	48	129	49	181	188					
87	147	107	88	148	108	89	149	109	182	187		
7	67	27	8	68	28	9	69	29	183	184	185	186
124	44	125	45	126	46	179	180					
84	144	104	85	145	105	86	146	106	176	175	178	177
4	64	24	5	65	25	6	66	26	163	164	167	168
121	41	122	42	123	43	161	162	165	166			
81	141	101	82	142	102	83	143	103	172	174	173	
1	61	21	2	62	22	3	63	23	171	173		

Notes:

- Units number from SL to SR, Top to Bottom, and away from proscenium.
- All Units drawn on side of pipe are to be "Side Hung."
- Unit Positions are laid out in zones as indicated on the plot.
- See Designer for placement of floor units



Key

- DMX Iris
- ◡ Rosco I-Cue
- ◡ Floor Mount
- ◡ See Detail
- ◡ ColorSource PAR (MR) @ 90w
- ◡ ColorSource Spot 26° @ 150w
- ◡ ColorSource Spot 36° @ 150w
- ◡ ColorSource Spot 50° @ 150w
- ◡ Source 4 Jr Zoom @ 575w
- ◡ Source 4 PARnel @ 750w
- ◡ Power
- ◡ Address
- ◡ Gobo
- ◡ Mirror ball w/ motor
- ◡ Pinspot @ 30w
- ◡ Practical



Show: **The Normal Heart**

Theater: **Sprinkle Theatre - UNCG**

Director: **Kyle Metzger**

Scale: **1/2" = 1' - 0"**

Date: **October 23, 2019**

Designer: **J. Diamond**

View: **Large Scale Plot**

Master Electrician: **Quinn Kraft**

Draft: **J.D. (VectorWorks 2019)**